

Welcome to Icknield Walk First School



Reception Teachers

Wren Class:



Mrs Bailey
Wren Class Teacher

Finch class:



Mrs Kayleigh Williams
Finch Class Teacher
(Mon-Wed)



Mrs Ruth MacLeod
Finch Class Teacher
(Thurs-Fri)

Starting School

- Nursery to Reception – our priority is to ensure your child is happy and settles well.
- Communication – this may feel different from your Nursery setting because we don't send home daily diaries. Our 'Weekly overview' will help you to discuss the activities your child has experienced at school.
- Ways to communicate: Speak to your teacher **after** school, via email or request a phone call.

Week beginning 05/01/2021

Theme of the week: People Who Help Us – Nurses and Doctors

<p>Personal, Social and Emotional Development Class and school routines Creating social stories to reinforce positive behaviour Listening skills with Lola</p>	<p>Literacy Phonics – Revise j,w,x,y,z and segment/blend with these sounds. Introduce zz, qu and sh Reading 'Zog and the Flying Doctors' Writing a list of items for Princess Pearl's first aid kit Tricky word practise: go, no, was, yes Reading non-fiction books</p>
<p>Communication and Language Carpet time activities Story time: non-fiction books about 'People Who Help Us' CIP time interactions</p>	<p>Mathematics Count forwards and backwards 0-20 and know 1 more/less Classification of objects. Sorting them into groups that we can discuss/classify</p>
<p>Physical development Outdoor PE: Ball Games- throw to a partner Fine motor skills: scissors skills. Matching the occupation to the vehicle Using split pins</p>	<p>Understanding the World Learning about the role of doctors and nurses Discussing what we already know and what we might like to find out about doctors and nurses Understanding how our bodies work</p>
<p>**These activities may change due to your children's needs and interests.</p>	<p>Expressive Arts and Design Zog paintings Small world Role play</p>

Note: Here is an example of our weekly overview. This will be emailed out to you the week before, so that you can see what we will aim to cover at school.

Transitioning from Nursery to Reception

7 areas of learning in the Early Years Foundation Stage (EYFS)

3 Prime areas - Communication and Language
- Physical Development
- Personal, Social and Emotional Development

4 Specific areas - Literacy
- Mathematics
- Understanding the World
- Expressive Art and Design

Note: These 7 areas of learning will be covered throughout the week, some as adult led and some as independent activities that they can explore during their Child Initiated Play (CIP)

Communication

- Long term plans are available on our website in curriculum area.
- Newsletters will be sent home at the end of the week (Thursday) with key diary dates and information.
- The weekly overview of learning will be sent home electronically.
- Reading records, our school blog, our school website and parents evenings will also provide information.

Please note: teachers or office staff must be made aware of anyone new collecting your child.

The School Day

- There is a flexible start with doors opening from 8:40am – 8:50am. This helps the children settle in smaller groups. Collection will be at 3:15pm.
- Lunch is at 11:40am – 1:10pm (including lunchtime play on Reception playground).

The School Day

- Drop off time: Please prepare your child to come in independently.
- When they arrive, they add their name to the feelings tree and lunch board and then go to their morning time activity. A formal registration will then be done.
- Lunch options: Please discuss your child's lunch choice with them before they come into school.

A Typical Visual Timetable



Note: We always start our day by going through the visual timetable with our children so that they are aware of the structure of the day.

Daily Timetable

Day consists of:

- Whole class time, for example: carpet time, P.E. and circle time.
- Child Initiated Play (CIP)- which takes place both inside and outside, in the morning and afternoons.
- Group activities can be adult led or independent and focus on the 7 areas of learning.

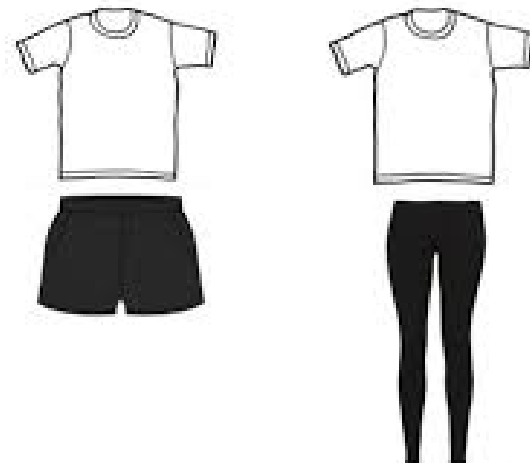
Clothing and Equipment

- Please name all clothing (uniform and P.E. kit), book bags, water bottles, sun hats, wellington boots.
- Please ensure children come to school in their P.E kit, on their P.E day, (TBC)
- Due to the cloakroom being small please only send in necessary equipment; **water** bottle, book bag for their tray and a spare change of clothes for their peg.

Outdoor P.E. kit



Indoor P.E. kit



Preparing your Child

To help your child become independent please practise:

- Dressing and undressing
- Toileting
- Putting on shoes and coats
- Lunch time- using cutlery

Questions ...

